

Appendix: Dialock Merten WT



Safety note

Observe the instructions for installation and operation of the Wall Terminal (art. no. 732.29.125)!

Before beginning installation, ensure that the power supply is switched off. The installation work should be done by a qualified electrician only, as complex wiring is required.

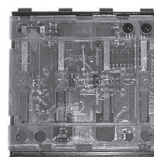


Fig. 1

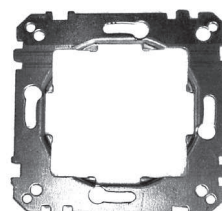


Fig. 2

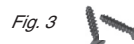


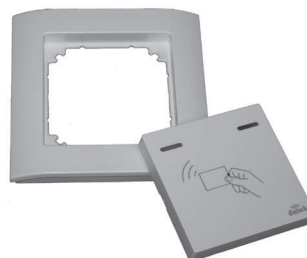
Fig. 3

Scope of delivery

- Reader unit Dialock Merten WT (Fig. 1)
- Support ring (Fig. 2)
- 2 screws (3.2 x 15) mm (Fig. 3)
- These instructions

Accessories

- Frame and cover (Fig. 4) available in various colours and types.



Technical data

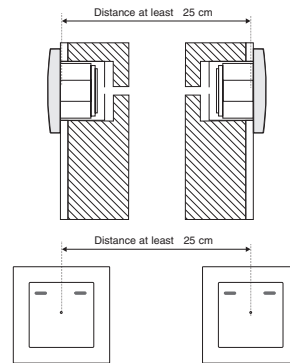
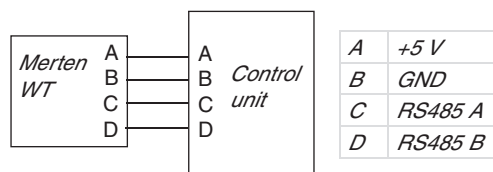
Protective system	IP 65
Operating temperature range	-20 °C ... + 70 °C
Relative humidity (non-condensing)	0 - 95 %
Cable length (reader - control unit)	max. 50 m
Recommended cable	J-Y(St)Y 2 x 2 x 0,8
Max. conductor cross section	1,0 mm ²
Dimensions	(84 x 84) mm

Suitable for installation flush with wall.
Liable to modification without notice.

Mounting instructions

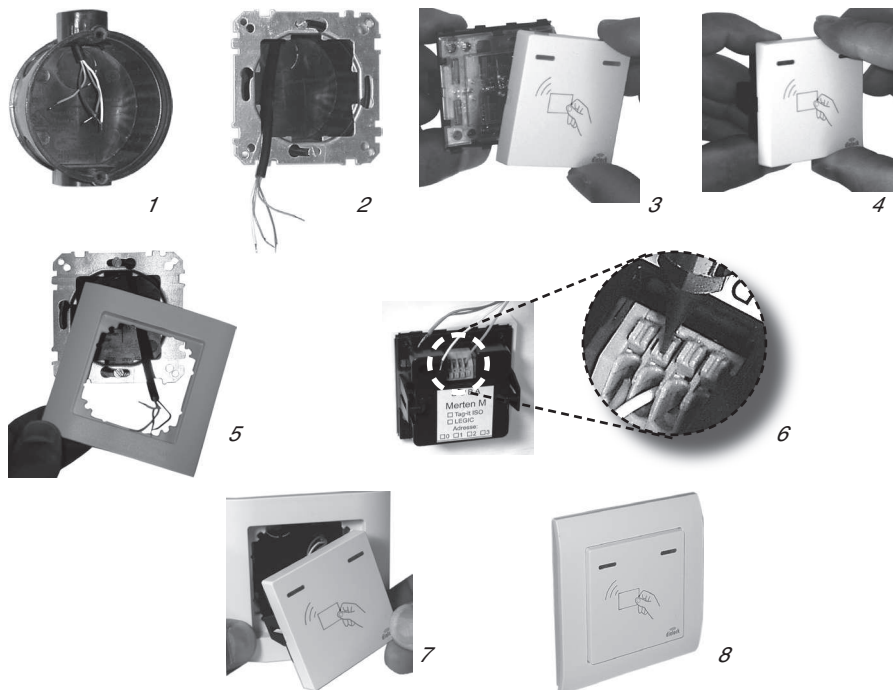
Electrical connection

Standard cable J-Y(St) Y 2 x 2 x 0,8 max. 50 m.



English

Mounting



For start-up, see
Mounting and Operating Instructions, Wall terminal Dialock (art. no. 732.29.125).